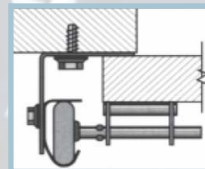


Introducing Mid-America's New Full View AFV Series!

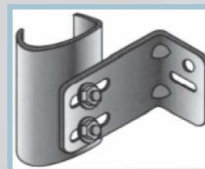
Great for both residential and commercial applications, Mid-America's new Aluminum Full View Series adds strength and functionality to any specification. Available in endless variations and colors, the AFV Series is a winner!

STANDARDS

Reverse Angle: Door overlaps jamb approximately 1" against continuous angle of track support system (angle foot toward door). May be used with wood or steel jambs. The door closes against the base flange of the continuous angle.

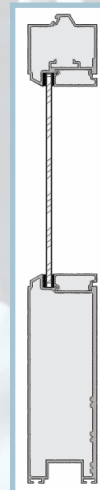


Bracket Mounted Track: Use with wood jambs. Door closes against stop molding.



General: The Full View AFV Series, as manufactured by Mid-America Door Co.

Related Work: Opening preparation, miscellaneous or structural metal work, access panels, finish or field painting, are in the scope of work of other trades.



Door Sections: Sections will be 21," 24" or custom width. Material is a 6063-T5 Mill finish aluminum (optional powder coating available). Sections feature a 2" tongue and groove meeting rail to provide a weather tight seal between sections. Intermediate stiles are 2" wide with thru bolt construction. End stiles are 3" wide with thru bolt construction. The Intermediate rails are 1.5" wide and the bottom and top rails are available in 3" or 6" widths. (Reinforced screw locations on all bottom brackets.) Glazing is 1/8" DSB glass standard with optional 1/2" insulation. Panels are also available in solid aluminum or decorative glass.

Track: Track systems are heavy gauge 2" or 3" galvanized steel. The gauge is determined by the door size and requirements. Track angles are 1 1/2" or 2" steel; also determined by door size and requirements.

Hardware: Hinges are 14 gauge galvanized steel with wide body hinges. Top fixtures are 16 gauge galvanized steel with a 14 gauge two bolt roller carrier. The 12 gauge galvanized steel top fixtures include a 12 gauge two bolt roller carrier. (The actual top fixture used is determined by the door size and requirements.)

Rollers: Standard rollers feature 10 ball bearings with a steel tire; optional 11 ball bearing rollers feature a white nylon coated tire.

Weather-Strip: Bottom rail of the section includes a vinyl weather-strip, running the entire length of the bottom to conform with the floor, which seals out the elements. Additional weather-stripping is available for the full width of header and jambs, assisting in preventing air infiltration.

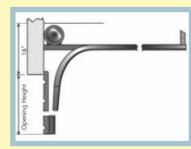
Spring Counterbalance: Springs are oil tempered, helical wound and stress relieved torsion type. Torsion springs are mounted on a continuous cross-header steel shaft, supported by bearing brackets. All springs are calculated for each specific door size and weight, in accordance with ANSI/DASMA 102 for a minimum of 10,000 cycles. All lift cables are the galvanized aircraft-type and will be selected to meet the minimum ANSI/DASMA 102 safety factor.

Lock: Lock will be an interior mounted slide lock, or optional keyed cylinder lock with inside lock bars.

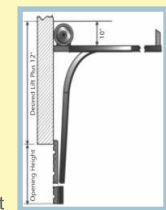
Operation: Operation to be by manual push up, chain hoist or electric operator with remote controls (by others).

Clearance & Mounting Requirements

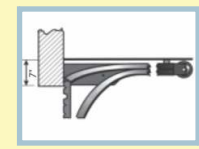
| | Clear Headroom | | Sideroom | | Depth Into Room | Depth Into Room | |
|---|-------------------|---------------|--------------|----------|-----------------------------|-----------------------------|-----------------------------|
| | 2" Track | 3" Track | 2" Track | 3" Track | 2" & 3" Track | 2" Track | 3" Track |
| Standard Lift Manual 12" | 12 1/2" | 21" | 4 1/2" | 5 1/2" | Door Height + 18" | Door Height + 13 1/2" | Door Height + 15 1/2" |
| Standard Lift Motor Operated | 19" | 21 1/2" | | | Door Height + 66" | | |
| Standard Lift Manual 15" | 16 1/2" | 21" | 4 1/2" | 5 1/2" | Door Height + 18" | Door Height + 13 1/2" | Door Height + 15 1/2" |
| Standard Lift Motor Operated | 19" | 22 1/2" | | | Door Height + 66" | | |
| High Lift Manual | High Lift + 12" | | 4 1/2" | 5 1/2" | Door Height Less Lift + 30" | Door Height + Lift + 6 1/2" | Door Height + Lift + 7 1/2" |
| High Lift Motor Operated | High Lift + 12" | | 24" One Side | | Door Height Less Lift + 30" | | |
| Vertical Lift Manual | | | 4 1/2" | 5 1/2" | 18" | Double Door Height + 2" | |
| Vertical Lift Motor Operated | Door Height + 18" | | 24" One Side | | 18" | | |
| Low Headroom Manual | 2" Track | | | 3" Track | | | |
| | Drum | Front Torsion | Rear Torsion | Drum | Front Torsion | Rear Torsion | |
| Headroom Requirements (Add 4" for Operator) | 4 - 8 | 11" | 6" | 4 - 8 | 12" | 8" | |
| | 4 - 12 | 11" | 6" | 4 - 12 | 12" | 8" | |
| | 5 - 18 | 13" | 8" | 5 - 18 | 14" | 10" | |
| | 800 - 32 | 16" | 11" | 800 - 32 | 17" | 13" | |



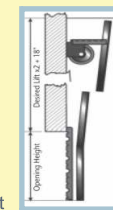
Standard Headroom



High Lift



Low Headroom



Vertical Lift



MidAmericaDoor.com - 1001 West Hartford - Ponca City, OK 74601 - (800) 364-3667



FULL VIEW DOORS.



America's Door.

ENDLESS POSSIBILITIES!



MIDAMERICADOOR.COM

AFV - The Right Solution for Homes & Businesses!

Architects, builders, designers and home owners have broadened their perspectives! The possibilities are endless.



- Year-round comfort and style.
- Quiet operation and durability.
- Glass available in clear, tinted or frosted.
- Other glass types available by request.



Wood Grain Powder Coated Colors.

Powder coated for durability, our pre-colored wood grain doors give customers a wide range of choices.



Solid Powder Coated Colors - Available in Any Color!

Mid-America Door offers UNLIMITED solid powder coated color choices. We can match virtually any color specified.



Glass Options - Clear, Tinted, Frosted or Custom.

Choose from our in-stock glass selections, or we'll install the glass of your choice! Call your Mid-America Door representative for details.

